

Cranial Bones & Sutures

Correlations Between Structure and Health

Sphenoid (S)

migraine; headache; depression; memory disturbances; impairment of brain function; dyslexia; neuropsychiatric problems; psychological disturbances; moodiness; "brain fog;" problems associated with taste, smell, hearing and vision; speech problems; dry mouth; teeth grinding; dental malocclusion; eye pain; deviation of the eyeball; eyelid weakness; balance disturbances; problems with tongue and/or sucking; endocrine (hormonal) disturbances; asthma; sinusitis; neck and lower back problems and scoliosis

Zygoma (Z)

disturbance around orbit of eye, eye problems and sinus trouble

Maxilla (MX)

pain or sensitivity in face, upper teeth and gums

Parietal (P)

pain around eye, migraine, increased intracranial pressure, feeling of pain inside head, aggressive behavior, attention span problems (ADD/ADHD) and visual problems

Occipital (O)

headache and functional disturbances of the brain; stenosis (narrowing) of vertebral artery; disturbance of salivary glands and eyes; disturbance of cranial nerves affecting digestive system, tongue and taste; and instability of cervical spine (neck)

Frontal (F)

problems with parts of the brain, visual and eyelid disturbances, eye pain, pupil dilation, sinus congestion, loss of smell, headache, personality changes, inappropriate behavior and disturbances of intellect

Nasal (N)

tearing and disturbances of nasal secretions and nasal breathing

Temporomandibular joint (TMJ) and Mandible (M)

TMJ pain; upper and lower jaw pain; reduced mouth opening; pain when chewing; pain on floor of mouth; difficulty swallowing; joint sounds; "clicking;" vagus nerve problems; nausea; vomiting; digestive problems; head, face and teeth pain; headache; throat pain; teeth grinding; tinnitus; excessive gum chewing; thyroid problems; neck pain; soreness; dizziness; balance disturbances; vision problems; tearing; sinus trouble and disturbance of taste

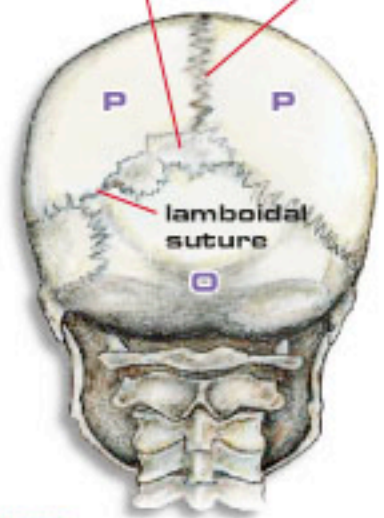
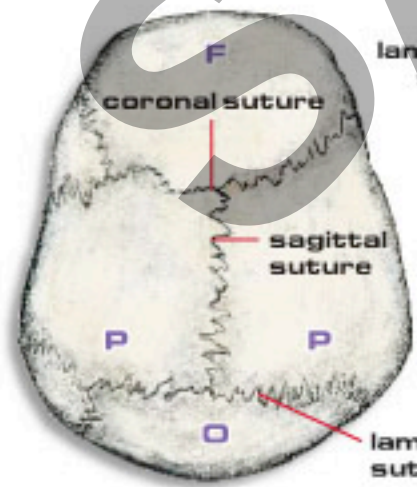
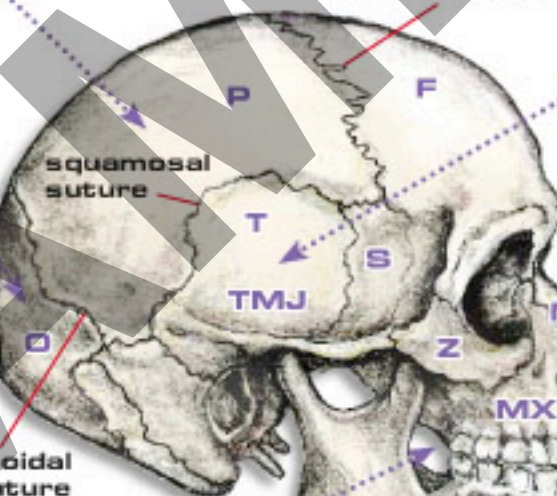
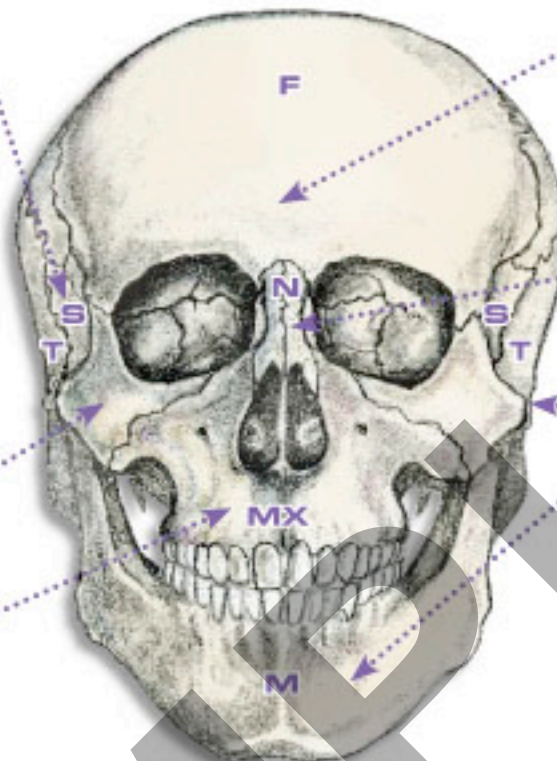
Temporal (T)

dizziness, hearing and balance disturbances, ringing or sounds in the ears, deafness, nausea, vomiting, tearing, nasal problems, problems with eye muscles, strabismus, teeth grinding and TMJ pain

interparietal bones (sutural bones)

sagittal suture

lambdoidal suture



Palate (roof of the mouth)

numbness in the face, headache, tearing, loss of smell, nasal symptoms (dryness, rhinitis, sinusitis, hay fever) and asthma

Hyoid (sits behind chin)

throat problems, tired voice, snoring, sleep apnea, vocal problems including loss of voice and swallowing problems



NOTE

These are general guidelines; anatomy and physiology vary from person to person.